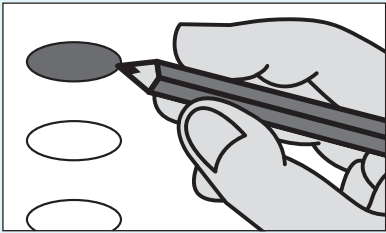


Instructions

Making selections

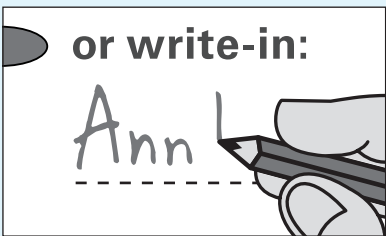


Fill in the oval to the left of the name of your choice. You must blacken the oval completely and do not make any marks outside of the oval. You do not have to vote in every race.



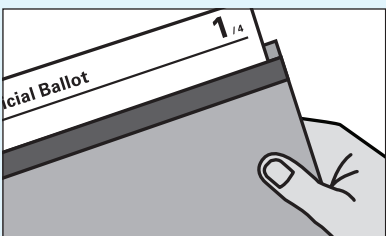
Do not cross out or erase, or your vote may not count. If you make a mistake or a stray mark, ask for a new ballot from the poll workers.

Optional write-in



To add a candidate, fill in the oval to the left of "or write-in" and print the name clearly on the dotted line.

Turning in the ballot



Insert the completed ballot into the ballot sleeve. Hand in the ballot to be counted.



Do not fold the ballot.

President and Vice President of the United States

Vote for 1 pair

- John F. Kerry and John Edwards Democrat
George W. Bush and Dick Cheney Republican
Michael Badnarik and Richard Campagna Libertarian
Ralph Nader and Peter Miguel Camejo Independent
or write-in:

U.S. Senator

Vote for 1

- Dennis Weiford Democrat
Lloyd Garriss Republican
Sylvia Wentworth-Farthington Libertarian
John Hewetson Independent
or write-in:

U.S. Representative

Vote for 1

- Brad Plunkard Democrat
Bruce Reeder Republican
Brad Schott Libertarian
or write-in:

County Commissioners

Vote for up to 2

- Camille Argent Democrat
Chloe Witherspoon Republican
Amanda Marracini Libertarian
or write-in:

Judge Retention: State Supreme Court

Vote yes or no

Keep Robert Demergue as Chief Justice of the State Supreme Court?

- Yes
No

Ballot Measure 113: Financing for Mass Transit

Vote yes or no

Shall regional mass transit taxes be increased \$158.34 million each year by increasing sales tax?

Shall regional transportation district taxes be increased \$158.34 million annually and by whatever additional amounts are raised annually thereafter by increasing the rate of sales tax levied by the district by four-tenths of one percent, from the current six-tenths of one percent to one percent commencing January 1, 2005, and, in connection therewith, shall regional transportation district debt be increased \$3.477 billion, with a repayment cost of \$7.129 billion with all proceeds of debt and taxes to be used and spent for the construction and operation of a fixed guide way mass transit system, the construction of additional park-n-ride lots, the expansion and improvement of existing park-n-ride lots, and increased bus service, including the use of smaller buses and vans as appropriate?

- Yes
No

Continue voting next side

